

PAPER • OPEN ACCESS

Preface

To cite this article: 2020 *IOP Conf. Ser.: Earth Environ. Sci.* **492** 011001

View the [article online](#) for updates and enhancements.



ECS **240th ECS Meeting**
Digital Meeting, Oct 10-14, 2021

**Register early and save
up to 20% on registration costs**

Early registration deadline Sep 13

REGISTER NOW



PREFACE

On behalf of the committee, I would like to welcome the conference participants. The 2nd ICAST 2019 International Conference is a forum for bringing together leading experts to discuss various issues in the field of animal science and the environment. Various research topics and latest discoveries will be discussed in this forum. The main topics discussed are related to problems in the world of animal science and the environment such as: physiology and reproduction of livestock, nutrition and feed technology, waste management, environment and by-products of livestock, breeding, animal welfare, poultry production, socio-economics and agriculture extension.

At this international conference, approximately 200 papers will be presented orally and posters (including papers from keynote speakers). The paper came from several universities and research institutions within the scope of ASEAN countries and outside ASEAN. The 2nd ICAST 2019 International Conference raised the theme "Sustainable Animal Production and Welfare in The Tropical Environment". I would like to thank the keynote speakers and participants who have contributed their thoughts in advancing the world of animal science and the environment.

In particular, I would like to thank the Government of South Sulawesi Province, the Rector of Hasanuddin University, Dean of Animal Science Faculty, Hasanuddin University, the sponsors of the activities, the committee of The 2nd ICAST 2019 and all those who have supported this conference. Without your participation, this conference will not be as successful as it is today.

On behalf of the committee, we wish you all the best, the best health and prosperity. Let's enjoy the city of Makassar together for mutual success. Thank you for your attention and cooperation.

With my best wishes!.

Muhammad Irfan Said
Chair of Organizing Committee The 2nd ICAST-2019



PAPER • OPEN ACCESS

Peer review statement

To cite this article: 2020 *IOP Conf. Ser.: Earth Environ. Sci.* **492** 011003

View the [article online](#) for updates and enhancements.



ECS **240th ECS Meeting**
Digital Meeting, Oct 10-14, 2021

**Register early and save
up to 20% on registration costs**

Early registration deadline Sep 13

REGISTER NOW

Peer review statement

All papers published in this volume of *IOP Conference Series: Earth and Environmental Science* have been peer reviewed through processes administered by the proceedings Editors. Reviews were conducted by expert referees to the professional and scientific standards expected of a proceedings journal published by IOP Publishing.



PAPER • OPEN ACCESS

Conference Committee

To cite this article: 2020 *IOP Conf. Ser.: Earth Environ. Sci.* **492** 011002

View the [article online](#) for updates and enhancements.



ECS **240th ECS Meeting**
Digital Meeting, Oct 10-14, 2021

**Register early and save
up to 20% on registration costs**

Early registration deadline Sep 13

REGISTER NOW

Conference Committee

Advisory Committee

Prof. Dr. Dwia Ariestina Pulubuhu, MA. (Hasanuddin University, Indonesia)

Prof. Dr. Ir. Lellah Rahim, M.Sc (Hasanuddin University, Indonesia)

Conference Chairman

Prof.Dr.Ir.Muhammad Irfan Said, S.Pt,M.P,IPM (Hasanuddin University, Indonesia)

Vice Chairman

Dr. Muhammad Ihsan A.Dagong, S.Pt, M.Si (Hasanuddin University, Indonesia)

Secretary

Dr. Ir. Sri Purwanti, S.Pt, M.Si,IPM,ASEAN Eng. (Hasanuddin University, Indonesia)

Treasurers

Dr. Renny Fatmyah Utamy , S.Pt, M.Agr, IPM (Hasanuddin University, Indonesia)

Scientific Board

Prof. Dr. Ir. Herry Sondjaya, DEA (*Hasanuddin University, Indonesia*)

Prof. Ir. Muhammad Yusuf, S.Pt, Ph.D,IPU (*Hasanuddin University, Indonesia*)

Prof. Dr. Rr. Sri Rachma Aprilita Bugiwati, M.Sc. (*Hasanuddin University, Indonesia*)

Prof. Dr. Ir. Ambo Ako, M.Sc. (*Hasanuddin University, Indonesia*)

Prof.Dr. Ir. Jasmal A. Syamsu, M.Si, IPU, ASEAN Eng. (*Hasanuddin University, Indonesia*)

Prof.Dr.Ir. Sudirman Baco, M.Sc. (*Hasanuddin University, Indonesia*)

Prof.Dr.Ir. Muh. Rusdi, M.Sc. (*Hasanuddin University, Indonesia*)

Prof.Dr.Ir. Budiman, M.P (*Hasanuddin University, Indonesia*)

Prof.Dr.Ir. Syamsuddin Garantjang, M.Sc (*Hasanuddin University, Indonesia*)

Prof.Dr.Metha Wanapat (*Khon Khaen University, Thailand*)

Prof.Dr.Danilda Hufana-Duran (*Central Luzon State University, Science City of Munoz, Nueva Ecija, Phillipines*)

Dr.drh. Gozali R. Moekti, M.Sc (*The Centre for Veterinary Laboratory Services, Division Livestock Industry and Veterinary Services, Department of Agriculture and Agrifood, Brunei Darussalam*)

Dana Chow, MBA (*APAC at LGC Genomic Division, Singapore*)

Prof. Dr. Ir. Cece Sumantri, M.Agr.Sc (*Bogor Agricultural University, Indonesia*)

Prof. Ir. Burhanuddin Sundu, M.Sc.Agr, Ph.D (*Tadulako University, Indonesia*)

Prof. Dr.Ir.Syahrudin Said, M.Sc, (*Animal Scientist's Society of Indonesia, Indonesia*)

Drh. Akhmad Harris Priyadi (*Indonesian Animal Medicine Association, Indonesia*)

Technical Committee

Prof. Dr. Ir. Djoni P. Rahardja, M.Sc, IPU (*Hasanuddin University, Indonesia*)

Prof. Dr. Ir.Effendi Abustam, M.Sc, IPU (*Hasanuddin University, Indonesia*)

Prof. Dr. drh. Ratmawati Malaka, M.Sc (*Hasanuddin University, Indonesia*)

Prof. Dr. Ir. Asmuddin Natsir, M.Sc (*Hasanuddin University, Indonesia*)

Prof. Dr. Ir. Abd. Latief Toleng, M.Sc (*Hasanuddin University, Indonesia*)

Prof. Dr. Ir. Syamsuddin Hasan, M.Sc (*Hasanuddin University, Indonesia*)

Prof. Dr. Ir. Ahmad R. Siregar, M.S (*Hasanuddin University, Indonesia*)



Prof. Dr. Ir. Ismartoyo, M.Sc (*Hasanuddin University, Indonesia*)
Muhammad Rachman Hakim, S.Pt., MP (*Hasanuddin University, Indonesia*)
Dr. Hasbi, S.Pt, M,Si (*Hasanuddin University, Indonesia*)
Dr. Rinduwati, S.Pt, M.P (*Hasanuddin University, Indonesia*)
Dr. Ir. Siti Nurlaelah, S.Pt, M.Si, IPM (*Hasanuddin University, Indonesia*)
Dr. Ir. Naharia, S.Pt., M.P, IPM (*Hasanuddin University, Indonesia*)
Fadhilrrahman Latief, S.Pt, M.Si (*Hasanuddin University, Indonesia*)
Dr. Ir. Hikmah M. Ali, S.Pt, M.Si, IPU (*Hasanuddin University, Indonesia*)
Dr. Ir. Wempie Pakiding, M.,Sc (*Hasanuddin University, Indonesia*)
Marhamah Nadir, SP, M.Si, Ph.D (*Hasanuddin University, Indonesia*)
Dr. Ir. Agustina Abdullah, S.Pt, M.P,IPM (*Hasanuddin University, Indonesia*)
Ir. Veronica Lestari, M.Ec, IPM (*Hasanuddin University, Indonesia*)
Dr. Ir. A. Amidah Amrawaty, S.Pt, M.Si, IPM (*Hasanuddin University, Indonesia*)
drh. Kusumandari Indah Prahesti, M.Si (*Hasanuddin University, Indonesia*)
Dr. Vidyahwati Tenrisanna, S.Pt, M.Ec (*Hasanuddin University, Indonesia*)
Dr. Ir. Aslina Asnawi, S.Pt, M,Si, IPM (*Hasanuddin University, Indonesia*)
Dr. Ir. Jamila, S.Pt, M.Si, IPM (*Hasanuddin University, Indonesia*)
Dr. Ir. Muh. Ridwan, M.Si (*Hasanuddin University, Indonesia*)
Dr. Fatma Maruddin, S.Pt, M.P (*Hasanuddin University, Indonesia*)
Dr. Ir. Rohmiyatul Islamiyati, M.S (*Hasanuddin University, Indonesia*)
Dr. Ir. Anie Asriany, M.Si (*Hasanuddin University, Indonesia*)
Dr. Ir. Syahriani Syahrir, M.S (*Hasanuddin University, Indonesia*)
Prof. Dr. Ir. Hastang, M.Si (*Hasanuddin University, Indonesia*)
Endah Murpi Ningrum, S.Pt, M.P (*Hasanuddin University, Indonesia*)
Prof. Dr. St. Nurani Sirajuddin, S.Pt, M.Si (*Hasanuddin University, Indonesia*)
Dr. Syahdar Baba, S.Pt, M.Si (*Hasanuddin University, Indonesia*)
Dr. A. Mujnisa, S.Pt, M.P (*Hasanuddin University, Indonesia*)
Dr. Ir. Syahriadi Kadir, M.Si (*Hasanuddin University, Indonesia*)
Dr. Ir. Ilham Rasyid, M.Si, IPM (*Hasanuddin University, Indonesia*)
Dr. Ir. Ikrar Mohammad Saleh, M.Sc (*Hasanuddin University, Indonesia*)
Dr. Ir. St. Rohani, M.Si (*Hasanuddin University, Indonesia*)
Ir. Daryatmo, S.Pt, M.Si, IPM (*Hasanuddin University, Indonesia*)
Dr. Ir. Zulkharnaim, S.Pt, M.Si, IPM (*Hasanuddin University, Indonesia*)
Dr. Muhammad Hatta, S.Pt, M.Si (*Hasanuddin University, Indonesia*)

Cleavage ability of in vitro embryos of bali cattle based on different reproductive status of ovary at 48 hours after fertilization process

H Hasbi¹, H Sonjaya¹ and S Gustina²

¹Department of Animal Production, Faculty of Animal Science, Hasanuddin University, Jl. Perintis Kemerdekaan Km.10, Makassar 90245, Indonesia

²Department of Animal Husbandry, Faculty of Animal husbandry and Fisheries, Universitas Sulawesi Barat, Jl. Prof. Dr. Baharuddin Lopa, Tande Timur, Majene, 91412

E-mail: srigustinasain@gmail.com

Abstract. This study aims to determine the ability of in vitro embryo cleavage of Bali cattle 48 hours after the fertilization process based on different ovarian reproductive status. Ovaries from abattoirs are grouped into four categories: ovaries without corpus luteum and dominant follicles (-CL and -FD), without corpus luteum and with dominant follicles (-CL and + FD), with corpus luteum and without dominant follicle (+ CL and -FD), and with corpus luteum and dominant follicles (+ CL and + FD). After that, oocytes are collected by slicing and only oocytes with a cytoplasmic are homongent and have compact cumulus cells used in the study. The selected oocytes are then matured in an incubator of 5% CO₂, a temperature of 38.5 °C for 24 hours. After maturation, in vitro fertilization was carried out using fertilization media with a final concentration of spermatozoa 1.5 x 10⁶ spermatozoa/ml. Oocytes 5-6 after fertilization were washed 3 times using CR1aa media then cultured in 5% CO₂ incubator, temperature 38.5 °C for 48 hours. After 48 hours the culture was evaluated for the ability of embryo cleavage. The results showed that the number of embryos capable of cleave to stage 2 cells were not significantly different ($P>0.05$) in all treatments ($1.64 \pm 0.38\%$ vs $8.00 \pm 0.90\%$ vs $4.85 \pm 0.96\%$ vs $8.22 \pm 1.86\%$), while the number of embryos capable of cleave reached stage 4 cells ($11.48 \pm 0.82\%$ vs $24.00 \pm 2.64\%$ vs $24.27 \pm 2.23\%$ vs $10.96 \pm 0.69\%$), 8 cells ($11.48 \pm 1.15\%$ vs $8.00 \pm 1.07\%$ vs $26.21 \pm 2.79\%$ vs $15.07 \pm 1.40\%$), 16 cells ($0.00 \pm 0.00\%$ vs $1.33 \pm 0.38\%$ vs $4.85 \pm 0.76\%$ vs $1.37 \pm 0.38\%$), and the ability of embryos cleavage ($24.59 \pm 11.60\%$ vs $41.33 \pm 24.32\%$ vs $60.19 \pm 22.45\%$ vs $35.62 \pm 10.83\%$) was significantly higher ($P<0.05$) in the ovaries with corpus luteum and without dominant follicles (+ CL and - FD). Conclusion, the ability of embryo division to reach 4 cells, 8 cells, and 16 cells after 48 hours culture was higher in the ovaries with corpus luteum and without dominant follicles (+ CL and - FD).

1. Introduction

Bali cattle are germplasm of Indonesia that needs to be maintained. Bali cattle have several advantages including being of good reproductive and carcass quality, resistant to tropical environmental conditions and poor feed, and having high fertility [1]. Therefore, to maintain its existence it is



necessary to apply technology, especially in vitro embryo production technology (IVEP) consisting of in vitro maturation (IVM), in vitro fertilization (IVF) and in vitro culture (IVC) [2].

The successful application of IVEP technology is influenced by several factors, one of which is the media used. The media used influences the process of oocyte nucleus maturation and for the development of the embryo to the stage of morula and blastosis. In vitro culture (IVC) is the final stage in the application of IVEP technology after IVF and IVM [3, 2]. After the in vitro fertilization process, the proportion of zygotes that can develop to the blastocyst stage during culture is only around 30-40% [4]. The quality of oocytes and culture media used after the fertilization process are the main factors that greatly influence the ability to develop to the blastocyst stage [5].

Embryogenesis is a complex process characterized by the use of maternal and transcription proteins to support the development of the embryo until the genome activation process leads to the synthesis and transcription of new proteins at the right amount and in accordance with the stages of their development [6]. Deviations during the initial embryogenesis process can lead to developmental and survival disorders of the embryo [5]. Currently, information on the application of IVEP technology and the fission ability of Bali cattle embryos after the fertilization process is still limited. Therefore, this study aims to determine the fission ability of the embryos in vitro of Bali cattle based on different ovarian reproductive status at 48 hours after the fertilization process.

2. Material and methods

2.1. Material

The Bali cattle ovaries are obtained from Tamangapa slaughterhouse, Makassar City, South Sulawesi Province. Oocytes are selected based on a homogeneous cytoplasmic state and compact cumulus cells. Freezing semen was obtained from the Livestock and Animal Health agency of South Sulawesi Province.

2.2. Methods.

2.2.1. Collection and in vitro oocytes maturation. The Bali cattle ovaries from slaughterhouse brought to the laboratory in a solution of 0.9% NaCl plus 100 IU/ml penicillin and 100 µg/ml streptomycin sulfates. Ovaries are classified according to ovarian reproductive status: ovaries without corpus luteum and dominant follicles (-CL and -FD), without corpus luteum, but with dominant follicles (-CL and + FD), with corpus luteum, but without dominant follicle (+ CL and + -FD), and with corpus luteum and dominant follicles (+ CL and + FD). Furthermore, oocytes collected in collection medium (phosphate buffered saline (PBS)) (Gibco by life technologies, USA) plus 0.2% bovine serum albumin (BSA) (Sigma-Aldrich, USA) by slicing technique. Collected oocytes are selected and only oocytes with grade A and B were used. The selected oocytes were washed three times in the maturation medium and then matured in a M199 maturation medium (Gibco by life technologies, USA) added 0.3% BSA, 10 IU/ml pregnant mare serum gonadotrophin (PMSG) (Intergonan, Intervet Deutschland GmbH), 10 IU/ml human chorionic gonadotrophin (hCG) (Chorulon, Intervet international BV Boxmeer-Holland), and 50 µg/ml gentamycin (Sigma, USA). Oocytes maturation is carried out on petri dish with 35 mm Ø (Nunc, Denmark) in drop of 100 µl for 10-15 oocytes and covered with mineral oil (Sigma-Aldrich, USA) in 5% CO₂ incubator and 38.5 °C for 24 hours [7].

2.2.2. In vitro fertilization. Freezing semen from one male is used every time in in vitro fertilization. The frozen semen is thawed using fertilization medium at 37 °C for 20 seconds then centrifuged at 700 g for 5 minutes [8]. Spermatozoa deposits are added the fertilization medium to a final concentration of spermatozoa 1.5×10^6 cells/ml. Fertilization was carried out in a drop (80 µl for 10-15 oocytes) and covered with mineral oil (Sigma-Aldrich, USA) and then incubated in 5% CO₂ at 38.5 °C for 5-6 hours [9].

2.2.3. *In vitro* culture. After 5-6 hours IVF, the oocytes were washed four times on the Charles Rosenkrans 1aa culture medium (CR1aa) then were transferred to the culture medium. The culture was carried out in a drop of 80 μ l and covered with mineral oil (Sigma-Aldrich, USA) and then placed in incubator of 5% CO₂ 38.5°C [10]. Dividing ability of embryos is evaluated after 48 hours of culture, that are divided into 2 cells, 4 cells, 8 cells, and 16 cells stages.

3. Result and discussion

The ability to divide of *in vitro* embryos of Bali cattle based on different ovarian reproductive status at 48 hours after the fertilization process can be seen in fig. 1, the result of this study presented in table 1.

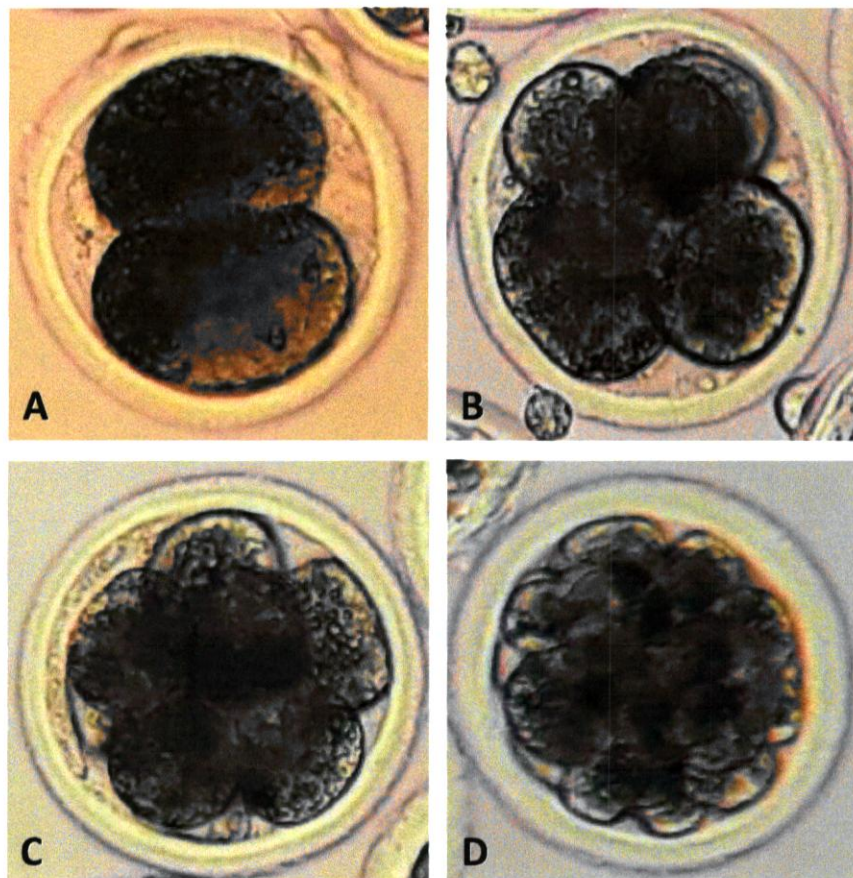


Figure 1. Cleavage ability of *in vitro* embryos of Bali cattle on different ovarian reproductive status at 48 hours after fertilization process. A: 2 cells, B: 4 cells, C: 8 cells, D: 16 cells (Zeiss Axio Imager A2 with a Zeiss Axiocam HRc, Germany). 10 x 20 magnification.

Table 1. Cleavage ability of in vitro embryos of Bali cattle on different ovarian reproductive status at 48 hours after fertilization process

Ovarian Reproductive Status	Number of oocytes	Cleavage ability (% mean ± SD)			
		2 cells	4 cells	8 cells	16 cells
-CL and -FD	61	1 (1.64 ± 0.38) ^a	7 (11.48 ± 0.82) ^a	7 (11.48 ± 1.15) ^a	0 (0.00 ± 0.00) ^a
-CL and + FD	75	6 (8.00 ± 0.90) ^a	18 (24.00 ± 2.64) ^{ab}	6 (8.00 ± 1.07) ^a	1 (1.33 ± 0.38) ^a
+ CL and -FD	103	5 (4.85 ± 0.96) ^a	25 (24.27 ± 2.23) ^b	27 (26.21 ± 2.79) ^b	5 (4.85 ± 0.76) ^b
+ CL and + FD	73	6 (8.22 ± 1.86) ^a	8 (10.96 ± 0.69) ^a	11 (15.07 ± 1.40) ^a	1 (1.37 ± 0.38) ^a

Different superscripts in the same column show significant differences ($P < 0.05$). Ovaries without corpus luteum and dominant follicles (-CL and -FD), Ovaries without corpus luteum and with dominant follicles (-CL and + FD), Ovaries with corpus luteum and without dominant follicle (+ CL and -FD), Ovaries with corpus luteum and dominant follicles (+ CL and + FD).

Table 1 shows that the in vitro division ability of bovine embryos 48 hours after fertilization was significantly higher ($P < 0.05$) in ovarian + CL and -FD of reproductive status at 4, 8 and 16 cells stage, whereas in 2 cells stage the ability of division the embryo is same in all ovarian reproductive status. This shows that the presence of corpus luteum and the absence of dominant follicles influence the ability of embryo to divide up to stage 16 cells. McGee and Hsueh (2000) reported that presence of corpus luteum in the ovary which produces progesterone does not inhibit the growth of subordinate follicles but inhibits the growth of dominant follicles resulting concentration decreasing of estrogen and inhibin. Low concentrations of estrogen and inhibin will increase the secretion of follicle stimulating hormone (FSH) which causes the growth and development of subordinate follicles to produce better quality oocytes [12]. Furthermore, Boediono et al. (2006) explains that the presence of dominant follicles inhibits follicle development and affects the quality of oocytes produced.

The results of this study also showed that the ability of the bovine embryo dividing 48 hours after fertilization process was 14.29% for 2 cells stage, 43.95% for 4 cells, 37.97% for 8 cells, and 3.79% for 16 cells. This shows that 81.92% in vitro embryos of Bali cattle are able to divide up to 4-8 cells 48 hours after fertilization process. Gordon (2003) explained bovine embryos reach stage 4 cells take 2-3 days and stage 8 cells 3-5 days after estrus. Furthermore, Senger (2005) reported that bovine embryos reach stage 4 cells takes 1.5 days and 8 cells 3 days.

The ability of early embryonic development after fertilization is also greatly influenced by the follicular status which oocytes are obtained [16]. Most of the early embryos cannot reach the blastocyst stage due to developmental obstacles that are affected by maternal sygotic transition (MZT) stage which generally occur at 8 cells stage in cattle [17]. The occurrence of developmental obstacles in the embryo is closely related to the quality of oocyte cytoplasm and the ability of oocyte to activate the embryonic genome [16, 18]. Embryo is unsuccessful to transcribe its genome causes fail to develop [18]. Barnes and First (1991) reported that in early embryo development, the accumulation of protein and RNA in oocytes was important for the activation of the embryonic genome. In addition, it is necessary to activate the transcription of new embryo genomes outside the MZT to be able to develop further [17]. The activation of the embryonic genome may depend on activation or translation of several maternal transcription factors in oocytes [19]. To be able to develop normally, the embryo must begin the formation of zygote nucleus from the spermatozoa genomes through the demethylation active process of cytosine methylation which is strongly influenced by oocyte cytoplasm function [20].

4. Conclusion

The ability of embryo division to reach 4 cells, 8 cells, and 16 cells after 48 hours culture was higher in the ovaries with corpus luteum but without dominant follicles (+ CL and - FD).

Acknowledgment

This research was supported by Research Grant No. 1740/UN4.21/PL.01.10/2019 of the Ministry of Research, Technology, and Higher Education of the Republic of Indonesia.

References

- [1] Supriyantono A, Hakim L, Suyadi and Ismudiono 2008 Performance of Bali cattle at three different areas at Bali Province. *Berk. Penel. Hayati* **13** 147–52
- [2] Hegab A O, Montasser A E, Hamman A M, Abu El-Naga E M A and Zaabel S M 2009 Improving in vitro maturation and cleavage rates of buffalo oocytes *Anim. Reprod.* **6**(2) 416–21
- [3] Rahman A N M A, Abdullah R B and Khadijah W E 2008 In vitro maturation of oocytes with special reference to goat [Review] *Biotechnology* **7**(4) 599–11
- [4] Rizos D, Ward F, Duffy P A T, Boland M P and Lonergan P 2002 Consequences of bovine oocyte maturation, fertilization or early embryo development in vitro versus in vivo: implications for blastocyst yield and blastocyst quality. *Mol. Reprod. Dev.* **61**: 234–48
- [5] Feugang J M, Camargo-Rodríguez O and Memili E 2009 Culture systems for bovine embryos *Livest. Sci.* **121** 141–49
- [6] Memili E and First N L 1999 Control of gene expression at the onset of bovine embryonic development *Biol. Reprod.* **61** 1198–207
- [7] Gustina S, Karja N W K, Hasbi H, Setiadi M A and Supriatna I 2019 Hydrogen peroxide concentration and DNA fragmentation of buffalo oocytes matured in sericin-supplemented maturation medium *Afr. J. Anim. Sci.* **49**(2) 227–34
- [8] Suzuki K, Eriksson B, Shimizu H, Nagai T and Rodrigues-Martines H 2000 Effect of hyaluronan on monospermic penetration of porcine oocytes fertilized in vitro *Int. J. Androl.* **23** 13–21
- [9] Hasbi H, Gustina S, Karja N W K, Supriatna I and Setiadi M A 2017 Insulin-like growth factor-I concentration in the follicular fluid of Bali cattle and its role in the oocyte nuclear maturation and fertilization rate *Media Peternakan* **40**(1) 7–13
- [10] Neira J A, Tainturier D, Pen M A and Martal J 2010 Effect of the association of IGF-I, IGF-II, bFGF, TGF- β 1, GM-CSF, and LIF on the development of bovine embryos produced in vitro *Theriogenology* **73** 595–04
- [11] McGee E A and Hsueh A J W 2000 Initial and cyclic recruitment of ovarian follicles *Endocr. Rev.* **21**(2) 200–14
- [12] Taylor C and Rajamahendran R 1991 Follicular dynamics and corpus luteum growth and function in pregnant versus non pregnant dairy cows *J. Dairy Sci.* **74** 115–23
- [13] Boediono A, Yulnawati and Setiadi M A 2006 Maturation rate of ovine oocytes from different reproductive status and maturation medium *Hayati* **13**(4) 131–36
- [14] Gordon I 2003 *Laboratory Production of Cattle Embryos* Second Ed. (London: CABI Publishing)
- [15] Senger P L 2005 *Pathways to Pregnancy and Parturition* 2nd ed. (Washington (US): Current Conceptions, Inc.)
- [16] Sirard M A, Richard F, Blondin P and Robert C 2006 Contribution of the oocyte to embryo quality *Theriogenology* **65** 126–36
- [17] Barnes F L and First N L 1991 Embryonic transcription in in vitro cultured bovine embryos *Mol. Reprod. Dev.* **29** 117–23
- [18] Meireless F V, Caetano A R, Watanabe Y F, Ripamonte P, Carambula S F, Merighe G K and Garcia S M 2004 Genome activation and developmental block in bovine embryos *Anim. Reprod. Sci.* **82** 13–20
- [19] Vigneault C, McGraw S, Massicotte L and Sirard M A 2004 Transcription factor expression patterns in bovine in vitro-derived embryos prior to maternal-zygotic transition *Biol. Reprod.* **70** 1701–09

- [20] Young L E and Beaujean N 2004 DNA methylation in the preimplantation embryo: The differing stories of the mouse and sheep *Anim. Reprod. Sci.* **82** 61-78